

MARCH 2023

# SOUTHERN LIVING & *Real Estate*

**EAGER TO EXCEL! COMPETITORS, EXHIBITORS AND CROWDS PREPARE FOR THIS YEAR'S WARWICK SHOW**

PAGE 6

## It's show time!

WarwickToday  
StanthorpeToday





**NEW & USED CARS**  
**SERVICING**  
**ALL BRANDS**



**CASSELS**  
AUTOMOTIVE



**HONDA**



**SUBARU**



**Mahindra**

**HAVAL**



**GWM**

✓ We employ local    ✓ We support local  
✓ Cassels .....Your Local



20 Alexandra Drive, Warwick QLD 4370

07 4661 2533

[www.casselsauto.com.au](http://www.casselsauto.com.au)





Chicken puts in an order at Wild Sage Collective



Mmm so how do you drive this thing again?



So Chris let's talk turkey about this photo shoot. Chicken sizes up photographer Chris Munro.

Pictures: Chris Munro

## Life of Chicken

.....

### BY TANIA PHILLIPS

While most chooks are content to hang out in a chicken coop and scratch the dirt, one Allora fowl has much wider ambitions.

The aptly named Chicken loves nothing more than taking to the open road with her humans Wendy and Dave, who just happen to photograph her exploits.

Wendy's resulting Facebook page now has followers across the country checking out the latest Chicken adventures. Not bad for a bantam who was originally bought for a friend and never supposed to be part of the family.

"There are two stories mine and Dave's," Wendy explained.

"I go to a lot of ag shows or have been until recently, I was at an Ag show and I was in the chook pavilion there and there was a pen of chooks for sale. What stood out was her, her head was sticking out and she was asleep. I saw one of the chooks peck her, she looked sad, I felt sad and I had to do something about that.

"We weren't set up, didn't want chooks or

anything to do with chooks but I had a friend who had them and I thought well, I'll get this chook for my friend. I'll save her and my friend gets a free chook."

A few days after Chicken came home, they had planned a business trip to Canberra with the idea of dropping the young chook off in Northern NSW.

"That was her first trip," Wendy said.

"We got her home and we had to call her something because we were going to have her for a week or so, the show was early in February and the trip to Canberra was on Valentines Day. So, we called her Chicken because that's what she was and we didn't want to get too attached to her – they say as soon as you name something you always keep it but that's not always the case. We had to call her something."

However, Dave tells it slightly differently – something Wendy only discovered in another of the many recent interviews their famous Chicken has attracted.

"I was at home and Wendy came back from the show and she was carrying a small

chook and it just had this look on it's face, very human-like, it looked like it needed a home or something. It was an irresistible look, I've never seen it on an animal before let alone a chook. I just said I think we should keep her," Dave said.

It was a relief to Wendy who had fallen in love with their feathered friend. They now have a family of chooks, nine boys and Chicken and her daughter Crumpet though while Crumpet is content to be a normal chicken her mother prefers life on the road and the company of humans.

"After our Canberra trip, we realised she just enjoyed travelling," Wendy said meaning suddenly the duo found themselves with a chicken tow on any trip be it out of the state or to the shops.

"She is with us 24 seven now – where we go she goes. At the start I use to spam family and friends with all these photos, I think they got sick of it, well not sick of it but they said you should start a Facebook page because we're enjoying this and she's making us happy. It would do the same for others.

"It took six months to pluck up the courage to start the page. Because I enjoy photography, I was taking a lot of photos anyway but it slowly evolved from a couple of photos with chicken to now only a couple without her. I actually find it hard to take a photo without chicken now," she laughed.

It seems a lot of people love photos of Chicken with her Facebook page closing in on 5,000 members while she has a further 1,100 Instagram fans.

"The site is to make people happy," Wendy said.

"And because this happened at the same time as Covid was around, it was an outlet for people who maybe couldn't see or do anything. They could see what Chicken got up to or what she saw. It does make people happy.

"She's got a great personality, the more time you spend with her the more it comes out, she's different to all the other chooks, especially the ones I've had in my life.

"She's just a beautiful little thing."

## STANTHORPE SEPTIC SERVICE

NO JOB TOO BIG OR SMALL!!

AVAILABLE 7 DAYS A WEEK

WARWICK - STANTHORPE - TENTERFIELD



12505644-NG31-21

PHONE  
0407 634 221  
OR 07 4685 2396





# FOCUS ON JUMPERS AND JAZZ



Capturing the atmosphere of a French cafe.



Art Deco tea set anyone? Last year featured a tea set or two - will we see a teaparty this time around?



What is a French cafe without a French poodle?



The art cafe.



Inside the cafe in 2022.

# Yarntopians are getting much curiouser

BY TANIA PHILLIPS

Preparations for this year's Jumpers and Jazz in July are getting "Curiouser and Curiouser" for the yarn bombing group Yarntopians.

Yarntopian Coordinator Loretta Grayson says work is well underway for this year's display in the Kings Theatre foyer, with the group's many knitters, crocheters and other artisans of all ages already getting into the swing of the project.

The group has had crafters as young as six or seven up to people in their 90s – it doesn't matter how old or young they are, they can join the Yarntopians

"And because it's a team where anyone can subscribe to our newsletter and join in, the numbers of contributors change ever each year," She said.

"We have around 12-15 local team members from the Warwick area who are the ones who put in months and months of planning and crafting and install everything and get together for planning meetings and working bees.

"Then we have other people like out of town contributors who subscribe to the newsletter and post us their contributions and then we have people who are local and want to knit and crochet in their homes. They send in their contributions.

"Over the years our participants can vary anywhere from about 50 people to a hundred. Last year we had around 60 contributors."

The Yarntopians have been producing large scale yarn art installations since 2014 producing amazing art work out of yarn with installations including French cafe's and mid century rooms. The group now come under the governance of Jumpers and Jazz in July Inc and look forward each year to producing a show-stopping installation.

"We are sort of the official yarnbombing team of Jumpers and Jazz in July," Loretta laughed.

"There are lots of yarn bombing teams in



A little bit of France in downtown Warwick last time. This time around the Yarntopian have the foyer of the Kings Theatre as their canvas.

Warwick who do things for the festival but ours is kind of a sub committee of JJJ. "

She said the installations move from venue to venue each year with a new setting providing new inspiration.

"Last year we had a little shop that had been really kindly donated to us for the duration of the festival," Loretta said.

"There's a group called Showcasing Our Ateliers who work with JJJ – they're a group of artist and crafters and they set up their work in Warwick RSL's Kings Theatre each year," she said.

"You can go into Kings Theatre and see all of this wonderful art and craft from local and out of town art and crafters.

"That team has invited to set up our installation in the foyer of Kings Theatre. We're working alongside them this year. The management of the RSL have been really wonderful and said yes we'd love to have the Yarntopians set up in the foyer."

The historic building was a theatre back in

the day and is still used for a lot of functions but for the Yarntopians it offers some fabulous challenges including decorating a staircase this time around – their first.

"We'll be in the foyer which you get to from Kings Street, that's we're will be setting up," she said.

"Our installations are usually quite large, I can't tell you the exact size of the foyer but it's a decent-sized foyer that incorporates a staircase, a landing and a passage way. This is new that we get to incorporate the old staircase from Kings Theatre into our installation."

There ideas are generated in house coming from having a "very creative" and have varied and interesting over the past decade.

"Sometimes we'll have an idea for the next year's installation while we're still working on this year's," she said.

"It's a lot of fun and a lot of brainstorming happens when we get together, that's how we come up with our ideas.

"Last year we did a 1920s inspired French

Cafe and that was set up in a gorgeous little vintage shop front in Warwick. It was the perfect little building for a French Cafe. We did a lifesized Gypsy caravan, we did a retro kitchen one year, a couple of year's back it was a 1960s-70s lounge room.

"We've done lots of things."

And while they aren't giving too much away, Loretta said the needles and crochet hooks had been picked up again, the creative juices had been flowing and the yarn, often donated to the group, is out and being crafted. The group has things stored from their previous projects often repurposing them for the next year.

"We don't give too much away but as it gets close to the festival we'll put out more images and little teasers.

"But the name of our installation is Curiouser and Curiouser so it's an Alice in Wonderland inspired installation. Because we love colour we're probably going the original Disney type Alice in Wonderland but there will be inspirations from all of the different iterations of Alice. It will be very Yarntopian."

She said they have team members of all ages and skill levels.

"We benefit from some team members who have many years experience in knitting and crochet and can turn their hands to all sorts of challenging design briefs," she said.

"We also have crafters who are just beginners with knitting and crochet or people. We also have parts of our installations that can be made by people who aren't knitters or crocheters so there's always things to be sewn together. In the past we've put out calls for pom poms. One installation required a huge pom pom meadow. That was a great way for people who don't knit or crochet to contribute."

The team have been working on Curiouser and Curiouser since last October November with several more months work ahead.

"We are always looking for more people to help and they can email yarntopians@gmail.com or we've got a page on the Jumpers and Jazz Website."



# Creating an environment for growth

.....

BY TANIA PHILLIPS

Ironside Industry owner Diba Heinrich started her gym to create a safe space to meet, work out and catch up with friends.

The gym, in the beautiful Milk Factory precinct, came into being in late 2019 and has been evolving and growing ever since.

Diba's latest innovation is all about helping her friends and gym members continue on their fitness journey.

"Ironside Industry is excited to announce an exclusive partnership with Accredited Practising Dietitian (APD) and Accredited Sports Dietitian Taylor Ryans and Certified Nutritionist Dani Guy to bring the BiteRite Nutritional App to the Southern Downs.

"We love our members so much that we bought all of them an app for Valentine's Day.

"BiteRite fits right into the Ironside Industry philosophy to be the premier fitness facility for Southern Downs by bringing our members and the community, world-class fitness services and we could not be happier to help our community further along their fitness journey through the support of the BiteRite App."

For Diba, a powerlifter in her own right, is the logical next step for the business she and her husband Ben built from scratch and have watched flourish despite opening just before Covid hit.

"We wanted to provide an inclusive space for everyone to exercise and feel comfortable," she said.



Combining modern gym equipment and a beautiful old building.

"It's a little bit of a social scene where friends can meet up with friends and have a bit of a workout together but I just wanted to create a space for everyone so they would feel comfortable, accepted, that's a big thing.

"No expectations. If your fitness level is low and you wanted to gain that fitness level that's fine, or if your fitness level is high and

you wanted somewhere to continue that fitness journey no problems. I wanted to provide a space for all levels of fitness.

"But it's not just for fitness, people could come in and socialize, have a chat, do their workout and go home."

"I also needed somewhere for my training, there was nowhere in Warwick that I could

access the equipment I needed. I was travelling back and forth to Brisbane a fair bit to see my coaches and use their gym equipment. Then I thought, I wonder if I created a space and brought this level of equipment to Warwick, would it make a difference to other people's training too.

"I knew a lot of people were driving to Toowoomba at the weekends to train there and to try out the equipment that we didn't have here in Warwick."

Diba was determined to bring this experience to Warwick for other people and for her own training as well.

"I power lift, I have done for a little while," she said.

"I started off in a gym and saw a couple of people lifting heavy weights."

With the help of friends she took up the sport and managed to achieve her goal of experiencing competition level lifting. Diba competed in state titles in 2018 and 19 before Covid hit. She returned to the states last year in Townsville and is beginning her preparations for this year's Qld titles.

As well as continuing her training, Diba and husband Ben have now built their safe space and gym in the Milk Factory – a building she describes as both "beautiful" and having the right aesthetic for what they wanted to create.

"It goes hand in hand," she said.

"It is a gorgeous building.

"And to be in a part of Warwick's history, it's a pretty big privilege."



Ironside Industry owner Diba Heinrich with artist matty TePaea who created the gym's impressive mural.



Ironside Industry.

*Your*  
**PREMIER**  
GYM & WELLNESS CENTER  
IN THE SOUTHERN DOWNS

- World-class equipment
- Infrared Sauna
- Compression boots
- Personal training
- Nutritional supplements
- 24-hour Access
- Family friendly
- Member's only kitchen
- 2023 Wellness expansion launching soon!

● ● ●  
BECOME A MEMBER  
TODAY AND BENEFIT  
FROM OUR EXCLUSIVE  
PARTNERSHIP WITH THE  
 **BiteRite** NUTRITION APP



 THE FACTORY PRESCINCT, 2/145 VICTORIA STREET, WARWICK, QLD  
 07 4661 1129  IRONSIDE\_INDUSTRY  IRONSIDEINDUSTRY

12590732-HC09-23



FOCUS ON WARWICK SHOW



Horse events play a big part in the Warwick Show.



As always there will be lots of impressive livestock to view.



Dinosaurs at the show? Yes indeed.

Showtime for Warwick

BY TERRI GILBERT, WARWICK SHOW AND RODEO SOCIETY

Spano's IGA Warwick Show, 24 -26 March 2023, – will be where Country comes to town to enjoy the sights, sounds and smells that your local show bring each year.

The annual show will hold all the attractions that make the show the place to visit including the pavilions full of Cooking, Photography, Woodwork, Horticulture, needlework, floral Art, Pottery, poultry, lego, school sections and much more.

Our Prime Cattle and Prime Lambs have been gaining in popularity over the last year and we believe we will have an extremely competitive Show this year.

We have our young paraders to watch in the Stud Cattle and Sheep with schools traveling from far and wide to compete at this years Warwick Show with some great prize money and Trophies to be won.

Our wool classes are back again this year together with Sheep shearing classes and demonstrations. We will also see the return of our Dog Show and always popular Sheep Dog Trials.

This year we have a full horse ring section again with the return of the heavy horse and a full showjumping 23 day program with the return of the ever popular 6 Bar Showjumping on Friday to start the night program.

This year we will see the Dinkum Dinosaurs come to Warwick with 4 shows daily. Everyone will love the Dino- Larious Show where you can also meet and greet with the stars of the show, dance with a 4 mtr Disco Dinosaur, visit the moving , roaring baby dinosaur zoo and get a photo riding a dinosaur.

We will also the Amazing Animal Nursey return where you can have hands on experience feeding and cuddling the gorgeous alpacas, cheeky miniature goats, dorper and damara sheep, as well as lots more fluffy hens, ducklings, guinea pigs and noisy little piglet.

You can also enter your brilliant homemade



Dogs are big part of this years show.



There will be lots of exciting action to enjoy.



Smash Em Up Derby anyone?



All the fun of sideshow alley.

ute design in the Kindy Ute Show or enter your beloved pet in the pet parade with some many different categories to win.

This year we will have the hilarious comedy entertainment of the hootzat events with roving comedy skits and entertainment for the whole family.

Our People's day nighttime entertainment will begin with 6 Bar Showjumping and will include the popular harness racing, dare devil air defining FMX Kaos, Big W Fireworks spectacular and finish with the non-stop action

of the Demolition Derby.

You can take in the action of the side show alley till late and Saturday come back to start all over with a full arena program including the ever-popular Ute show.

Saturday night kicks off with our action-packed Rodeo including big money to be won in the Bull Ride, Saddle Bronc, Bareback, Steer Wrestling Barrel Race and Junior Barrel and Bull Ride events

We have, for the first time this year, the Young Farmers Challenge – so grab a team of four

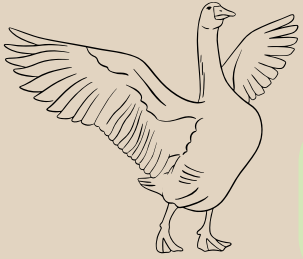
mates and have a go at nine challenges designed to test your farming skills, patience and stamina including building portable yards, novelty races, hay bale rolling and much more with extra points if you compete in the bullock ride.

You can then dance the night away with live music till late with Mik Oberle. This year we will have camping available on the grounds.

Check out our website for all the Schedules and categories in each event at the Warwick Show and come and have a try at winning a prize.

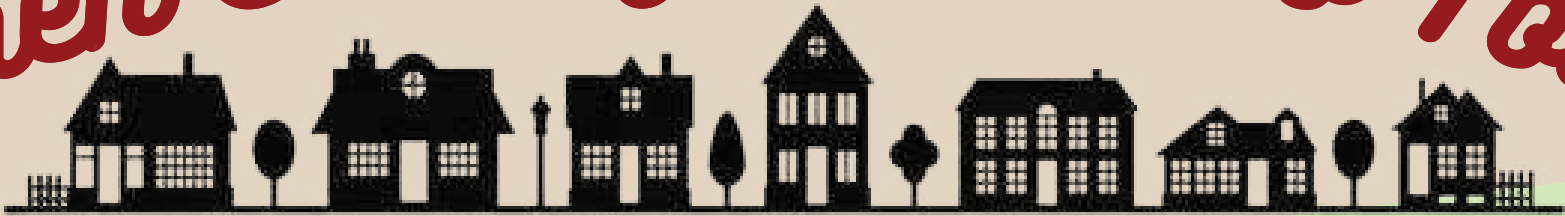


# SPANO'S

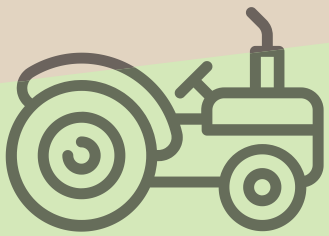


## 24, 25 & 26 March 2023

# When Country Comes to Town



## Proudly Featuring



Family Friendly Friday Night

\* Entertainment \*

Animal Nursery \* Ute Show \* Trots  
Dinkum Dinosaurs \* Show Sections

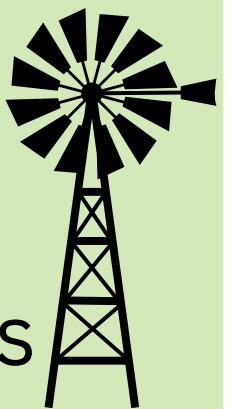
\* Rides & Entertainment \*

Live Entertainment Saturday Night

Saturday Night Rodeo Action

\* FMX Demonstration \*

Fireworks brought to you by



# BIGW

## Admission

Adults \$15 Kids U12. FREE Pensioners/Students \$10

Family Pass. \$30/day or \$50/weekend (2 A & 2 C)

Weekend Adult Pass \$25 W/end Pensioner/Student \$15

Ph: 07 4661 9060 or get social with us

[www.warwickshowandrodeo.com.au](http://www.warwickshowandrodeo.com.au)







# WEDDINGS



202010219807\_1-JW44-20

## Big Rigs for the big day

Trucks played a big part in the Wedding of Brenton and Ashleigh (nee Gordon) Herrmanns at Glenbridge Country Wedding on 14 January.

Brenton drives one for a living so it was only natural that they play a part in the wedding photos. Of course, what Brenton didn't know was that his bride would be arriving in one on the big day as well.

"We had Beautiful Country Wedding at a beautiful location near Warwick," Ashleigh said.

"What a perfect day for us with the help of some amazing people."

Those amazing people included the wedding party.

Ashleigh was attended by bridesmaids Tahlia Minogue, Rebecca Bolzan, Kaylie Adams, Rachael Maughan and Toriarna Costigan.

While Brenton's groomsmen included Lee Robson, Andrew Kook, Sean Murphy, Ross Thorn,

Joel Monckton and Shane Peasnell.

Keeping it in the family the couple had their daughters Marlee and Maycee Herrmann in the wedding parties as their beautiful flower girls.

The groom is the son of Trevor and Colleen Herrmann while the bride is the daughter of Graham Gordon and Leanne Bougoure.

The beautiful photographic memories of the day were taken by NL Photography.



Anyone can arrive in a car on their wedding day. Ashleigh chose something a little more unique and special to her and husband.



Wedded bliss.



The happy couple celebrate their big day.



You may kiss the bride.



The wedding party.



## BRIDAL DIRECTORY





*Does your business help couples create a day to remember?*

**THEN ADVERTISE AND BE SEEN** | Contact Lisa on 0407 690 066 or Samantha on 0439 420 289 for more information



# When neighbours become friends

.....

BY TANIA PHILLIPS

There is nothing better than a good old-fashioned Aussie barbecue to bring friends and neighbours together.

So when Goomburra resident Jenny Elford heard about Neighbours Day (celebrated each March) she decided a barbie was the perfect way to celebrate.

Neighbours Day (being held 26 March this year) is Australia's annual day of celebrating community and encouraging people to connect with those who live in their street.

The theme for Neighbour Day in 2023 is "Create Belonging" – a call to action to individuals, community groups, business and governments to take everyday actions that create social connection and foster respectful relationships.

For Jenny, last year's event, was a way to welcome new people to her community and reconnect with an old friend.

"It was through my involvement with the Goomburra Town Hall that I became aware of Neighbours Day in 2022," Jenny explained.

"James Wong from the Southern Downs Regional Council regularly attends the Goomburra Town Hall Committee meetings and he had mentioned it at one of our meetings early last year.

"After speaking with good friend MaryLou Gittins, we decided that by becoming involved in this initiative we could host a good old-fashioned Aussie bbq which would serve to welcome several families who were new to our Goomburra community as well as making it a



Jenny Elford and her friends and neighbours gathered in 2022 as part of the council's program.

memorable occasion for a neighbour and good friend who had suffered a brain aneurism four years previous and was going through other



That's when good neighbours become good friends.

setbacks with his health.

"He had a very social personality, and as he was no longer able to work, we wanted to make it an enjoyable and memorable day for him.

"After being selected as one of the recipients to host a Neighbours Day event, invitations were sent out to thirteen local families. Although only a small number of people were able to attend, those who did thoroughly enjoyed a very relaxing social get-together in beautiful Autumn weather."

This year, Southern Downs Regional Council is again supporting the event by offering \$200 gift cards to 25 neighbourhood-organised events hosted on the day.

However, Jenny said although she loved her barbecue last year she won't be hosting this time around.

"At this stage, I won't be participating in Neighbours Day 2023. After being the recipient

of a gift card to host an event last year, I feel it only fair that others have the same opportunity that I was privileged to last year," she said.

Southern Downs Councillor Marco Gliori said everyone needs good neighbours and he welcomed the return of the initiative in 2023.

"With Relationships Australia reporting that 28 per cent of Australians are experiencing social loneliness, it's important that we look out for each other and check in on our neighbours to help build the community we want to live in and be proud of," Councillor Gliori said.

"We can all work to create belonging for ourselves, our families and our neighbours. We can do this by focusing on inclusion and connection, making others welcome and by building respectful relationships with those around us.

"Neighbour Day is a reminder to reach out, over the fence or across the road, to build nurturing social connections with the people in our immediate community.

"Last year, a number of inclusive events were hosted across the region and I look forward to seeing how Southern Downs neighbours come together to celebrate Neighbour Day in 2023."

There are many different ways to get involved with Neighbour Day, whether it's big or small - an event, an activity or a neighbourly action - it all contributes to building respectful relationships, sustainable connections and reducing loneliness in local communities.

Everything needed to help organise your Neighbour Day event is now available on the [neighbourday.org](http://neighbourday.org) website.

## It's the little touches



90 Palmerin Street, Warwick • [www.galleriainteriors.com.au](http://www.galleriainteriors.com.au)  





Guess how many eggs are in the glass jar and win.



Come along and enjoy the kids Easter craft.



Easter bunny is coming to Rose City Shopping World.

# Easter Bunny is coming

These April school holidays, Rose City Shoppingworld will be full of fun Easter activity and excitement to keep the kids entertained.

There will be a free kid's craft hub near Coles, going from Monday 3 to Thursday 6, 10am to 1pm each day where they can make all sorts of Easter craft.

Running from Monday 27 March, there will be an Easter Egg guessing competition where

customers will have the opportunity to guess the number of eggs in the jar, the closest answer wins the whole lot.

The winner will be drawn on Thursday 6 April, just in time for Easter.

On Wednesday 5 and Thursday 6 April, customers can get a free printed 6x4 photo with the Easter Bunny from 10am to 1pm, near Woolworths, limited to one free photo

per family. For those wanting more pictures to share with family, there will be packages available to purchase.

To finish up the holiday excitement, the Easter Bunny will be visiting the centre on Monday 3, Tuesday 4 and Saturday 8 April from 10am to 12pm each day. So, bring the kids in and take some time out with free fun for the whole family.

- Easter Holiday Fun**
- Free Kid's Craft**
    - Monday 3 to Thurs 6 April, 10am – 1pm
  - Easter Egg Guessing Comp**
    - Monday 27 March to Wednesday 5 April
  - Free Easter Bunny Photos**
    - Wednesday 5 and Thurs 6 April, 10am – 1pm
  - Easter Bunny Visits**
    - Monday 3, Tuesday 4 and Sat 8 April, 10am – 12pm



# Easter Egg-citement

MONDAY 3 APRIL – SATURDAY 8 APRIL

- Egg Guessing Competition
- Meet the Easter Bunny
- Easter Craft
- Free Easter Bunny Photos & Appearances

CONNECT WITH US  
ROSECITYSHOPPING.COM.AU







Artist Anne Harris with Leaf Messages 2018 Plant Pigment on Silk and Wool.



Full Moon

Picture: Ebb and Flow Studio

# Finding connection and belonging

.....

BY KARINA DEVINE

Warwick Art Gallery proudly presents a unique new exhibition experience for Gallery visitors when Sunshine Coast based artist Anne Harris’s exhibition *Belonging: the embodiment of landscape* opens on 2 March.

Anne explores the natural world and uses the stillness created by acutely listening to look deeper into the internal landscape for a universal understanding of identity, rites of passage, and the cycles of life. Using traditional craft practices Anne embodies the mnemonic wisdom of plants, re-imagining the women’s ceremonies and rituals of her European, pagan and witch ancestry.

Through performance, installation, textiles and works on paper, Anne uses plants and detritus from the natural environment to make inks, dyes and installations. This work creates space to understand the interconnected and unspoken life force that is in all beings. The process creates a direct conversation between identity, self and place.

Anne is sixth generation Australian of English and European heritage and investigates this ancestry to inform and question her spiritual connection and sense of belonging.

The work reflects the complexities of women and the feminine exploring the cycles



Anne Harris Sensory Mark Making workshop

Picture: Ebb and Flow Studio

and how these are overlaid and informed by the natural world, including the moon phases, rites of passage and other women’s mysteries.

Incorporating the feminine and anima mundi into the understanding of landscape and connection to place.

Plants form a direct conversation between Anne and the work she creates, they are her teachers and co-collaborators, through process

life force that is in all beings.”

In partnership with the artist, Warwick Art Gallery presents opportunities for the public to delve deeper into the complex themes of the exhibition.

Sensory Mark Making workshop with Anne Harris Friday 3 March 10am – 3.30pm \$72/\$80

In this workshop you will make natural ink and explore how to use plant material to create brushes and mark making tools. Anne shares techniques to explore each of our senses and how to create marks that respond and record these explorations. This unique process unblocks the creative process and allows for intuitive creative play, connecting you more deeply to your inner being and the natural world that surrounds you. Book online at [www.warwicktickets.com.au](http://www.warwicktickets.com.au)

Exhibition opening and artist floor talk Saturday 4 March 2pm – 4pm FREE

Meet artist Anne Harris and gain a deeper understanding of the themes of her exhibition. All are welcome to attend this event – reservations preferred to assist with catering to 07 4589 5207

**Belonging:** the embodiment of landscape is on display at Warwick Art Gallery 2 March to 8 April 2023.

Open Tuesday to Saturday 10am to 4pm. Closed on public holidays.

Anne deeply listens to the subconscious dialogue between human and non-human.

This is translated to the audience through objects & images in response to this process.

“My work discusses notions of connection and belonging,” says Anne, “particularly in relation to women reclaiming sovereignty of self. My process-based practice creates space to understand the interconnected and unspoken



Belonging:  
*the embodiment of landscape*  
an exhibition by Anne Harris

*The work in this exhibition references mnemonic landscapes to explore identity, rites of passage and the cycles of life. Listening deeply to messages from the natural world, Anne uses traditional craft practices and performance to investigate the interconnected life force in all beings.*

2 March - 8 April 2023

49 Albion Street Warwick Queensland  
07 4589 5207 Tuesday - Saturday 10am to 4pm





# Trail begins to form

.....

BY TANIA PHILLIPS

Granite Belt Art Trail, that quirky showcase of the regions many and varied artisans, will officially kick off on 27 October but there is a lot to come before then.

The GBART organisers will run a series of development workshops for local artisans in the lead-up, aimed at helping them further develop their businesses.

The workshops are just one of a number of activities the GBART committee discussed at their Annual General meeting in Stanthorpe in late February as they gear up to present their bi-annual festival of community and creatives.

The Granite Belt Art and Craft Trail program encourages visitors to gallery hop their way around the Granite Belt.

The self-drive trail winds its way through galleries, workshop spaces, small halls, wineries and award winning cafes allowing visitors and locals alike to enjoy the talents of the regions artisans from artists to jewellery and cheesemakers.

Arts Trail founder Rosy Chapman said the event offers something for everyone, including, with the new workshops, the artisans themselves.

“We held our AGM at the RSL, had about 15 people in attendance and elected our executive committee for the year, it’s our event year, which is exciting because we’ve got a really strong skill set on the team,” she said.

“Now we’re just looking forward to getting into our strategy and planning as soon as we can.”

The new executive sees Roxane Scott as president, Linda Hodson vice president, Robert Ebenestelli treasurer and Rosy her self as the minute secretary.

“The first thing we will do is have our planning and strategy day but we have already got a lot of things underway,” she said.

“Our event has moved to bi-annual so we did a lot of planning last year in terms of getting some really strong foundations in place.”

The event runs from October 27-29 across the Granite Belt and the committee are looking to bounce back as we all emerge from the Covid cloud that fell over events in recent years.

“The second year of Covid was the most challenging because of the hard border closures,” Rosy admitted.

“Our major fundraising event had to be cancelled because our performing artist, who’s a local boy, lives in Sydney and couldn’t get home. We couldn’t get permission for him to cross the border for our major fundraiser. That’s done a bit of damage in just our ability to plan ahead with unattached funding. A lot of the funding we are able to access is attached to one aspect of the project but there are a lot of gaps we can’t get grant funding for that we need to fundraise ourselves.”

She said they are currently looking for sponsors for GBART itself and supporters for their Trail booklet which is sent out to the wider South East Queensland, Far North Coast area and outlines the trail, artisans and supporting places to stay.

As well as getting the “behind the scenes” details of running the event in place, the committee is already working on just who will take part this time around, with 18 expressions being received from individuals and groups across the region.

“There are some amazingly talented artists in this area,” Rosy enthused.

“GBART started in 2018 but the real crux for us was 2019. We had two bushfires in six-months and it was the middle of a five year drought. Our objectives for GBART are about economic uplift for sure but it’s also about community well-being.



GBART is an opportunity to buy something from local artisans as well as trying something new.



Artisans of all types are invited to take part in GBART.



There is something whimsical and fun about GBART.

“It’s a community well-being where we’re saying, bring everyone in to look at the amazing talent we’ve got here, let’s celebrate. We know that in a little town- population 5000 - we get a minimum 10 percent that get out and party, love it and just have a crack at something they’ve never tried before. It’s really good for artisans to showcase and meet people, it’s really good for the community because they get out and celebrate. We’re good at that here.

“But it’s also good because at that time we were struggling with our tourism industry so in 2020, which I think was the first year of Covid, we had Covid sensitive event, we pared it right back had 3000 visitors through 27 venues in three days. They stayed an average of three to four nights and they spent about \$600 per person per day on – in this order – wine, accommodation, food and retail. That’s not what they spent at GBART, that’s just what they spent in the community. So the economic uplift for the Southern Downs was about \$1.5 million from a second year event with a budget of \$60,000.”

And while, of course the committee have their eyes on the main event, they are also looking to help the artisans in a more day-to-day way

through their development workshops. And the artisans are responding well to the workshops, spread over the next few months, booking them out quickly as they are announced.

“We got a really lovely grant from the Rise Foundation and half of that money is purely on artisan development, without the artisans we don’t have a trail,” she said.

“There are a lot of people injecting a lot into the economy but we’ve got to make sure that the artists aren’t treated like Cinderella.

“This year we’re running the series of workshops. One of them is about creating a webpage to sell things on during year, it’s also about sharing and networking and introducing artisans to others.

“We’ve got a really great guest speaker for one of them but some of these workshops are already fully booked so while we can talk about them, there’s not many seats at the table, they filled up very quickly already. They’ve been really well received by the community.”

But with more workshops planned there will be more opportunities to go along and learn.

For more information contact [artisan@gbart.org.au](mailto:artisan@gbart.org.au).



Preparations are underway for this year’s trail.





# REAL ESTATE FOCUS

## Move straight in

This bright and light-filled three-bedroom home is positioned in a highly desirable west Warwick location and is situated on a generous 915m<sup>2</sup> block. All the essentials for family living are here with two living zones, three bedrooms and an open-plan refurbished kitchen. This has the easy-care style you've been searching for. Contemporary updates add a new level of quality throughout

From the moment you enter the home, you will immediately appreciate the original features of the home that create a welcoming atmosphere that is carried through the home. The hub of the home comprises a separate kitchen and dining room, separate living area and sunroom. The well-equipped kitchen is complete with plenty of space and quality appliances including ample storage and bench space.

The home also includes three generous sized bedrooms and share access to the main family bathroom, which has a shower over the bath but also another separate shower and a separate toilet.



Air-conditioning throughout. Spend weekends relaxing on the sprawling undercover deck or in the garden. The backyard is perfect for the four-legged family members as it is fully fenced and a low maintenance garden.

**Property Features:**

- Three bedrooms
- Welcoming front entry
- East facing Sunroom



- Refurbished kitchen and meals area
- Lovely lounge room
- Covered outdoor entertainment area
- Bathroom with separate bath and shower
- 915m<sup>2</sup> fenced allotment
- Separate laundry
- Second downstairs toilet
- Double lock-up garage

**Address:** 3 Clarke Street, WARWICK **Description:** 3 bedrooms, 1 bath, 2 car **Price:** \$455,000 **Inspection:** By appointment  
**Contact:** Kelly Reardon 0409 274 001, [kelly.reardon@waderealestate.com.au](mailto:kelly.reardon@waderealestate.com.au) **Agent:** Wade Real Estate

# LISTINGS WANTED

**We have motivated buyers looking purchase, homes, land and rural acreage in the Warwick, Allora, Clifton and surrounding areas.**

**Call our dedicated sales team on 4661 5655 to organise a free appraisal today!**



Servicing Allora, Clifton, Warwick & Surrounds.

To get the best result when selling your home you need to understand the local market.

We are Warwick's local property specialists. Serving the Warwick and the surrounding areas since 1987.

We know the market, the people, the ares, the ins-and-outs, it's part of our DNA.

Visit us across from the Warwick Post Office  
96a Palmerin Street P: 4661 5655  
[waderealestate.com.au](http://waderealestate.com.au)





# WANT **MORE** FOR YOUR HOME?



ADVERTISE YOUR PROPERTY HERE!  
In the Warwick and Stanthorpe Today  
Property Guide

**You can expect a better price and more visitors to your open home<sup>2</sup>**

Find out how you can get a better price for your home by including print to your advertising campaign!

Speak to your agent today about advertising in the

**Warwick and Stanthorpe Today Property Guide!**

EXPECT  
**BETTER PRICE**



higher price for your home<sup>1</sup>

EXPECT  
**MORE BUYERS**



**MORE** buyers at an open home<sup>2</sup>

EXPECT **MORE**  
FROM PRINT



**MORE** page impressions on the online listing<sup>2</sup>

**WARWICK AND STANTHORPE TODAY PROPERTY GUIDE: 4661 9800**

Warwick**Today** Stanthorpe**Today**



# Splendid larger property

Thirteen Adrienne Court is positioned in a quiet and private cul-de-sac, on a large 1524sqm block, surrounded by other quality homes in a pleasant neighborhood.

This area is a much sought-after area of Glennie Heights, close to primary school and built back in the time when developers developed larger block sizes and built quality homes.

This very attractive home features 9ft ceilings throughout. Cleverly designed is the three bedrooms, two of which are positioned at the front of the home offering a tranquil outlook onto the private and landscaped large yard and gardens, protected by the stylish bullnose verandah which provides extra comfortable outdoor living space.

Double brick has been used on the western wall which helps insulate the home well from hot summers and cool winters. All bedrooms offer ceiling fans and built-in cupboards with the main bedroom offering a sizable walk-in wardrobe.

Entering this home, you will not only be delighted by the way the current owners have maintained their home immaculately, but pleasingly surprised by the size of the large undercover stylish and aesthetically pleasing bullnose verandah offering comfortable outdoor living space.

The well-appointed and original kitchen has



a nearly new electric oven with gas hotplates, large walk-in pantry, Miele dishwasher, extra-large fridge space which conveniently flows into the large dining area, overlooking the rear patio and easy access to the large size BBQ area all under roof.

This home offers generous amount of

storage cupboards, ceiling fans in all rooms, fully insulated ceiling, near new good quality carpet. The large family room is adjacent to the larger living room which could become a fourth bedroom.

Excellent car accommodation offering secure parking in the large 12m x 9m powered

shed with the convenience of remote roller doors. An attached carport of the same size adjoins the front of the shed for extra car accommodation.

Plenty of garden sheds also for those extra gardening tools, general storage etc.

This property certainly awaits inspection.

Address: 13 Adrienne Court, WARWICK Description: 3 bedrooms, 1 bath, 4 car Price: \$620,000 - offers invited Inspect: By appointment  
Agent: Mandy Steketee 0400 592 463 mandy@waderealestate.com.au, Wade Real Estate



# Mid-century charm

There are original 1960's Retro features throughout this house for lovers of the mid-century era.

With agent Helen Harm believing this one would be "great for an investor!"

It features a tidy interior and has three bedrooms all with built-in wardrobes and that all important aircon in the living and master bedroom.

There is a bathroom and separate toilet with a second shower next to the laundry.

The original garage has been converted to rumpus lounge while north-east facing entertaining area features views towards the river and mountains on 637 m<sup>2</sup>.

The workshop and gazebo add extra value to the property.

"There is plenty of potential to put your personality on this property," Helen said.

Contact Helen Harm on 0408 457 496 for inspection. Go to [www.helenharm.com](http://www.helenharm.com) for more pictures.



Address: 4 Miller Street, WARWICK Description: 3 bedrooms, 2 baths, 1 car Price: \$300,000 (offers around) Inspection: By appointment

Contact: Helen Harm 0408 457 496 Agent: Helen Harm Real Estate

# Elevated views

Agent Helen Harm believes this property on the shoreline of Leslie Dam is a once in a lifetime opportunity.

This is one of only eight properties with direct access to Leslie Dam.

The property features a rustic open plan timber cottage with a basic kitchen and bathroom.

The deck on the north site of the property overlooks Leslie Dam and there is a fenced boundary to 3.2 Ha.

Riparian rights come as part of the title and there is plenty of opportunity for fishing, boating and swimming in what is being marketed as a "great family getaway with lots to on offer."

Wildlife in the area is considered plentiful and varied and there is a private road in to the property from Glenvale Rd.

Contact Helen Harm on 0408 457 496 to arrange inspection. Go to [www.helenharm.com](http://www.helenharm.com) for more photos.



Address: Glenvale Road, LESLIE DAM Description: 1 bedroom, 1 bath Price: \$500,000 (offers over) Inspection: By appointment

Contact: Helen Harm 0408 457 496 Agent: Helen Harm Real Estate





**Art Deco Designer**

- STANTHORPE
- Rendered 3 bed in Amosfield Rd
  - Fireplace in lounge living
  - Kitchen has slow combustion & electric stove
  - Dining has timber windows
  - Shower, vanity & toilet
  - Laundry & Storage
  - Single garage in fenced 625 m<sup>2</sup> yard
  - Artist studio with fireplace in backyard

**\$ 300,000 +**



**High on a Hill**

- MARYVALE –
- Enjoy the relaxed ease of country living!
- Air con + wood fire
  - 2 Bed, 2 built-in
  - Open Living areas with vinyl planks
  - Shower, vanity & toilet + laundry
  - Garage converted to Studio
  - Carport, shed, 3 Large rain water tanks
  - Fully fenced 2023 m<sup>2</sup> yard

**\$ 375,000**



**Scenic Views**

- MARYVALE – 6637 m<sup>2</sup> (1.6 Acres)
- Views of valley back to Great Dividing Range
  - Flood Free and gently sloping
  - Ideal spot, privacy, relaxed country lifestyle
  - Escape the hustle & bustle of city
  - Nestled in the mountains
  - Direct access to main highway
  - 20 Mins east of Warwick
  - Well maintained acreage

**\$ 300,000**



This could be  
advertising for  
your property

**Call Helen Today!**



**On a Creek**

- GREYMARE – 2251 m<sup>2</sup> (.55 Acres)
- On the banks of Greymare Creek
  - Level block, slopes gently to the creek
  - Bitumen road frontage
  - Ideal spot, privacy, relaxed country lifestyle
  - Escape the hustle & bustle of city
  - Live in picturesque Southern Down Region
  - Direct access to main highway
  - 20 Mins west of Warwick

**\$ 150,000+**



**ARATULA Markets**

- Ideally suited to owner operator, possibly with young family
- Highway corner frontage established 30 yrs
  - 2 Satellite liquor licences
  - 18 products on consignment
  - Coffee, smoothie, juice, crepe & waffle bar
  - Extensive product instore beside fruit & veg
  - Cold rooms, refrigeration, display units
  - Delivery truck & Forklift

**\$ 250,000**

**For Rent: 4661 3663**

3 Brm, 2 bath, open plan, kitchen, 2 car ..... **\$ 470 p.w.**

FURNISHED - 2 Brm, 1 bath, lounge, kitchen, 1 car ..... **\$ 520 p.w.**

**URGENT !! ..... WE NEED RENTALS  
IN GOOD REPAIR**



**Good Building Block**

- ALLORA
- Larger 917 m<sup>2</sup> block
  - In the CBD
  - Road frontage 24.1 m
  - Sealed road
  - Town water
  - Power available
- Be quick – won't last

**\$ 125,000**



**HENDON Half Acre**

- Investors opportunity!!
- 2023 m<sup>2</sup> (½ Acre) with rural views
  - Power in Street
  - 23K (20 mins) North of Warwick

**Half Acre Lot**

**\$ 65,000**



**2 Street Frontages**

- Great opportunity for a light industry venture, establish new business or upgrade to higher profile site near Black Toyota, Top Two Motorcycles, Betta Storage.
- Corner of Murphy Street & Ogilvie Road. Both are bitumen roads with 300m or more frontage.
  - Power, water sewerage nearby.
  - Zoning is Specialised Centre
  - 2.6 Ha off Cunningham Highway.

**\$ 2,210,000**



**Multi Titled Acreage**

- MARYVALE
- 6 Separate Titles
  - 3 bed, Clad to save painting
  - Separate shower, separate toilet
  - Kitchen/Dining –storage, electric appliances
  - Open plan living
  - Rain water
  - Old sheds, chook run
  - Highway frontage
  - Boundary fenced

**\$ 650,000 +**



**Multi-Million Views**

- On QLD/NSW border, 20 mis to Warwick
- Training centre, retreat, glamping, paintball park
- 3 Bed
  - 2 Bath
  - Fully furnished
  - Air conditioning in living
  - Kitchen dining with woodfire
  - Bar setup for entertaining
  - Deck overlook dam & play area
  - 64.77 Ha
  - 3 bay Shed
  - 2 Dams
  - Solar + Mains Power
  - Rain Water Tanks

**\$ 900,000+**





# Solid investment with plenty of growth

This solid brick complex of seven flats is ideally located in a central Warwick location, set on a level 1,776sqm block and just a brief stroll to schools, parks, and shopping amenities.

It's been maintained throughout, and all units are presented in great rental condition.

Currently fully leased and earning excellent returns.

This property offers an outstanding prospect with future-proof investment rewards and represents a value-packed chance to capitalise of a substantial income generating asset earning immediate cashflow.

- Opportunities include renovating and increasing rent yield, strata titling or as a development site.
- Seven x two-bedroom, one-bathroom flats, all with garages
  - Fresh and brick interiors feature combined living and dining area
  - Fully occupied with leases, strong rental area
  - Outstanding growth and rental scope with solid annual returns
  - Generating monthly gross income of \$6140
  - General yearly rates for complex \$14,500 per annum



Address: 47 Canning Street, WARWICK Description: 14 bedrooms, 7 baths, 7 car Price: \$1,100,000 Contact: Kelly Reardon 0409 274 001 Agent: Wade Real Estate

# Comfortable country living

Located a short drive to Warwick, nine minutes or 6.9k, this 11.8 Ha (29 Acre) property has a lot on offer to a buyer who has livestock.

There is a large five-bay shed featuring two roller doors, a smaller four bay shed, cattle yards, a Thompson Longhorn Crush and Race, pig pens, three water troughs, three paddocks, town water, a dam and electric fencing.

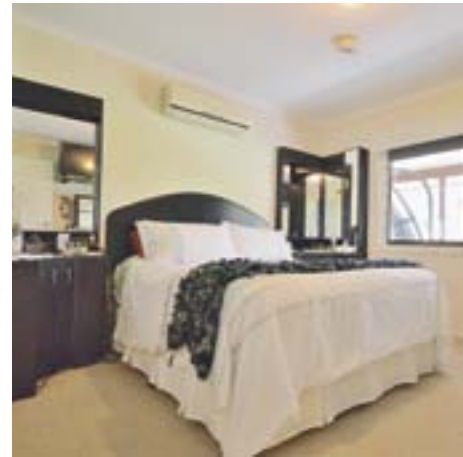
But it's not all about the great outdoors with this property.

The farm also features a comfortable ranch style brick, airconditioned house.

There three bedrooms with built in wardrobes the master bedroom has ensuite and separate aircon.

For warmth and ambience there is a fireplace in the lounge media area off the entry hall.

- The galley kitchen features good cupboard space and electric appliance with a laundry and utility room next two it.
- The house also includes a powder room off the family bathroom with separate shower and bath.
- There is a lot of storage throughout and down the hallway while there is a great outdoor north facing entertainment area and established gardens.
- On the south side there is a facing full length patio across the front of the home as well.
- Fastidious buyers will appreciate the attributes on offer at this property.
- Contact Helen Harm on 0408 457 496 to arrange inspection. Go to [www.helenharm.com](http://www.helenharm.com) for more photos



Address: 82 Smelter Road, ROSENTHAL HEIGHTS Description: 3 bedrooms, 2 baths, 5 plus car Price: \$ 1,250,000 Inspection: By appointment Contact: Helen Harm 0408 457 496 Agent: Helen Harm Real Estate





# Limited Time Offer **ESSENTIAL PLUS**

Discounted rate

**4.89%**

Comparison Rate\*

**5.05%**

## New Loans:

- ✓ <70% LVR
- ✓ Owner Occupied & Investment
- ✓ Principal & Interest & Interest Only
- ✓ Minimum Loan \$100,000

**Book an  
Appointment Today!**



Kelly Ellis  
0484 276 559



Di Stuart  
0427 594 807



Dan Carpenter  
0487 884 044



Ian Tate  
0407 712 573

Credit eligibility criteria, terms and conditions, fees and charges apply. Warwick Credit Union Ltd ABN 98 087 651 116. Trading as Warwick Credit Union, Gympie Credit Union and Dalby Credit Union, AFSL and Australian credit licence 240556.

Please note this information does not take into account your personal circumstances and is general advice only. Before opening any Warwick Credit Union account, please read the Conditions of Use and decide if the account is right for you. Interest rates are subject to change without notice and should be verified with your local Warwick Credit Union branch.

\*This comparison rate is based on a \$150,000 loan over 25 years. WARNING: This comparison rate is true only for the example given and may not include all fees and charges. Different terms, fees or other loan amounts might result in a different comparison rate.





# Helen Harm

## Real Estate

for Property in Warwick



### Rental Investment

- 3 Bedroom
- Aircon in lounge living
- Good kitchen/ dining
- Bath, separate shower, vanity,
- Laundry utility, separate toilet
- Fenced 506 m<sup>2</sup> yard
- Single garage in backyard
- Storage

INVESTORS: Rent appraisal \$300 p.w.

**\$ 300,000 +**



### Good Building Block

ALLORA

- Larger 917 m<sup>2</sup> block
- In the CBD
- Road frontage 24.1 m
- Sealed road
- Town water
- Power available
- Be quick – won't last

**\$ 125,000**



### As New Duplex

Each Unit has:-

- 3 Large built in bedrooms
- 2 bath, master has en suite
- Living dining off the kitchen
- Lounge with aircon
- Enclosed courtyards
- Laundry
- Storage cupboards
- Solar power
- Rain Water tank
- 2 bay garage
- 997 m<sup>2</sup> yard

INVESTORS: Current rent is \$900 p.w.

**\$ 795,000**



### Family Friendly

Designed for family living.

- 4 Bed, 2 bath, 2 car
- Main bed has en suite, walk-in robe
- Bathroom has separate shower, vanity
- Separate toilet
- Separate laundry
- Modern open plan living
- Galley kitchen, large pantry
- Undercover entertaining
- Fully fenced 845 m<sup>2</sup> with Vehicle access

**\$ 450,000+**



### It's Got the Lot

Great 1193 m<sup>2</sup> corner block in Meadow Bank.

- Main bedroom has en suite & walk in robe
- Plus 4 more built in bedrooms
- Modern kitchen • R/C air-con + ceiling fans
- Open plan living • Rumpus room
- Separate lounge • Bathroom + separate toilet
- North facing entertainment area
- 36 solar panels (13.32 kw) + solar hot water
- Powered 3 bay shed • 3 Carports +++

**\$ 580,000**



### 1960's Retro

Original 1960's Retro features for mid-century lovers of the era.

- 3 Bedroom, built ins
- Aircon in master bedroom & living
- Open plan kitchen, dining & family
- Bathroom, separate toilet
- 2nd shower next to laundry
- Rumpus lounge
- Carport, gazebo, workshop on 637 m<sup>2</sup>

**\$ 300,000+**



### Workin Wear

Workin Wear WARWICK

- Sell products always in demand
- Main Street location
- Workwear, work boots, safety supplies & more
- Solid customer & account base
- Open 5 ½ days
- Steady growth since 2008
- Easily run by Owner + 1 or 2

Plus STOCK on Hand

**\$ 210,000 +**

## TEMPERATURE RISING

AND SO IS THE MARKET PRICES  
CALL HELEN TODAY!

2022  
2021  
2020



### Almost 1 Acre

ALLORA - Boundary realignment allows for almost an acre, 3350 m<sup>2</sup> level allotment with 2 street frontages to Bennett Street and Erhardt Street (off Darling Street)

- Town Water available
- All city facilities
- Fenced

Settlement can occur once survey and paperwork is finalized.

**\$ 175,000**



### On Leslie Dam

On Leslie Dam Shoreline

- Rustic open plan timber cottage
- Basic kitchen & bathroom
- Deck on the North overlooks Leslie Dam
- Fenced boundary to 3.2 Ha
- Riparian rights are part of the title
- Private road to the property from Glenvale Rd
- Great family getaway with lots on offer
- Fishing, boating, swimming ...

**\$ 500,000+**



### Simple Country Life

Short drive to Warwick – 9 mins or 6.9k – Livestock suits 11.8 Ha (29 Ac)

- Large 5 Bay Shed • Smaller 4 Bay Shed
- Cattle Yards, Thompson Longhorn Crush/ Race
- Dam, 3 paddocks, water troughs & more
- 3 bed, built ins – main ensuite & aircon
- Separate shower & bath, separate toilet
- Kitchen/Dining – storage, electric appliances
- Lounge media has fireplace + aircon

**\$ 1,250,000**

### LAND

WARWICK - 25930 m<sup>2</sup>, High profile, 2 street frontage, Zoned specialised ..... \$ 2,210,000

ALLORA - 917 m<sup>2</sup>, town water, power at road, sealed road frontage .....SOLD... \$ 125,000

MARYVALE - 6637 m<sup>2</sup>, power next door, level block, mountain VIEWS .....\$ 300,000 O/A

HENDON - 2023 m<sup>2</sup>, power next door, rural fence ..... \$ 65,000

See ..... [www.helenharm.com](http://www.helenharm.com) ..... for more listing

[www.helenharm.com](http://www.helenharm.com)

**0408 457 496**

Helen Harm  
Licenced Principal

